

## Stirred Waterbath WB-4MS

### Description

Waterbath thermostat WB-4MS is designed for chemical, pharmaceutical, medical and biological laboratory research. Due to the built-in magnetic stirrer, the water bath offers increased temperature stabilization (up to 0.1°C). Optional Racks s. Page 2

Easy set up, high temperature maintenance accuracy, compact size and attractive modern design make this water bath widely used. Simultaneously up to 2 tube racks can be installed.

### Technical Data

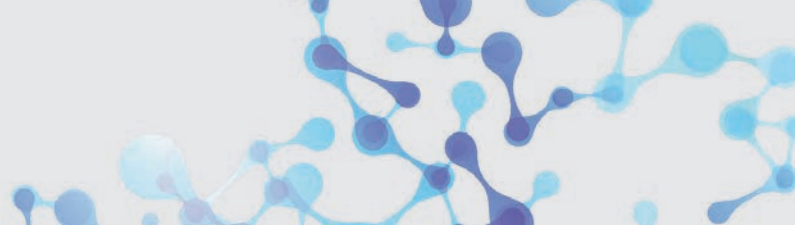
Item No.	104.4500
Tank capacity	4 Litres
Temperature setting range	+25°C to +100°C
Temperature control range	5°C above ambient up to +100°C
Temperature setting resolution	0,1°C
Temperature stability	± 0,1°C
Temperature uniformity at +37°C	± 0,1°C
Stirring speed control range	250 – 1.000 rpm
Digital time setting	1 min – 96 hrs / non-stop (increment 1 min)
Timer sound signal	Yes
Display	LCD, 2 x 16 signs
Digital setting of temperature, time and mixing speed	Yes
Plastic lid with stainless steel interior included	Yes
Quiet operation	Yes
Working volume	235 x 135 x 110 mm
Overall dimensions (W x D x H)	340 x 270 x 250 mm
Weight	3,4 kg
Nominal operating voltage	230 V, 50/60 Hz
Power consumption	230 V, 50/60 Hz/ 600 W (2,6 A)



WB-4MS



WB-4MS



# Stirred Waterbath WB-4MS Racks

## Racks (optional)



### Rack TR-16/19

Test tube rack for  
Ø 16 - 19 mm tubes  
Capacity: 16 tubes  
Dimensions (W x D x H):  
155 x 90 x 112 mm



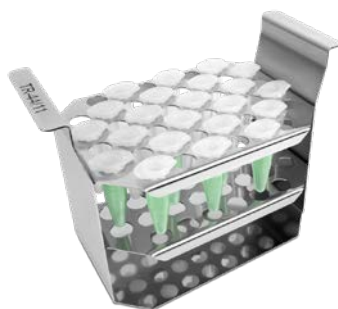
Rack TR-16/19

Rack TR-5/30



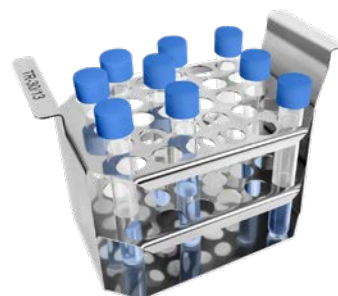
### Rack TR-5/30

Test tube rack for  
Ø 30 mm tubes  
Capacity: 5 tubes  
Dimensions (W x D x H):  
155 x 90 x 112 mm



### Rack TR-44/11

Test tube rack for  
microtest tubes 2 / 1.5ml  
Capacity: 44 micro tubes  
Dimensions (W x D x H):  
155 x 90 x 112 mm



### Rack TR-30/13

Test tube rack for  
Ø 10 -13 mm tubes  
Capacity: 30 tubes  
Dimensions (W x D x H):  
155 x 90 x 112 mm