

CPS-20 Orbital CO₂ Shaker

Description

The CPS-20 CO₂ shaker provides regulated orbital motion of the platform and is suitable for use in the CO₂ incubator.

The CPS-20 was specially developed for use in difficult environments such as CO₂ and humidity. The innovative shaker ensures reproducible results in cell culture growth.

A choice of 5 interchangeable platforms provide the possibility of performing various procedures and techniques in various cultivation vessels.

CPS-20 has a brushless motor with a guaranteed lifetime of up to 35.000 hours.

The unit is equipped with a triple eccentric mechanism for platform movement that provides excellent balancing characteristics, superior reliability and quiet operation.

The specially designed remote control protects the electronics from the CO₂ environment of the incubator. In addition, the remote control minimises disturbance to the incubator environment and the experiment in progress.



CPS-20 CO₂ shaker

Technical Data

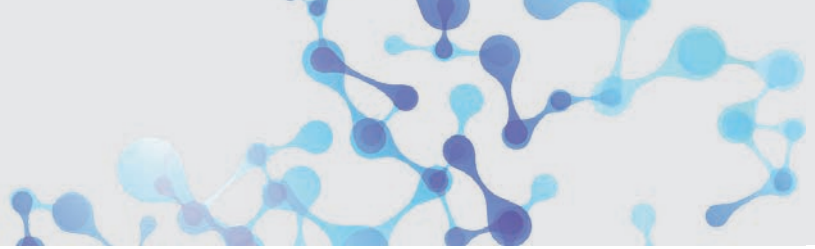
Speed control range	50 - 250 rpm* (increment 10 rpm) <small>*max. speed depends on the load and vessels' shape</small>
Digital time setting	1 min – 96 hrs / non-stop (increment 1 min)
Digital speed control	Yes
Max. continuous operation time	168 hrs
Max. load	3 kg
Orbit	20 mm
Relative humidity	bis zu 98% (bei einer Umgebungstemperatur von +4°C bis +45°C in einer nicht kondensierenden Atmosphäre)
Overall dimensions (W x D x H)	255 x 255 x 100 mm
Weight	3.4 kg
External power supply	Input AC 100-240 V, 50/60 Hz, Output DC 12 V
Power consumption	470 mA, 5.7 W
Part No.	105.1216



The remote control minimises disturbances to the incubator environment and the experiment in progress. The unit controller is designed for operation in cold rooms, incubators and closed laboratory rooms at ambient temperature from +4°C to +40°C in a non-condensing atmosphere and relative humidity up to 80% for temperatures up to 31°C decreasing linearly to 50% relative humidity at 40°C.

Remote control connection

For the shaker CPS-20, a feedthrough into the incubator of approx. 10 mm diameter is required. The mains plug is connected externally to the remote control.



CPS-20 - Orbital CO₂ Shaker

Optional Platforms

Universal Platform UP-12



Universal platform with adjustable bars for different types of flasks, bottles, and beakers with silicone mat.

Working area: 270 x 185 x 40 mm

Holding Bar HB-200



Additional holding bar for UP-12

Platform P-12/100



Platform with clamps for 12 flasks.
Working area: 250 x 190 mm
Flask volume: 100 - 150 ml

Platform P-6/250



Platform with clamps for 6 flasks.
Working area: 250 x 190 mm
Flask volume: 250 - 300 ml

Platform P-16/88



Platform with spring holders for up to 88 tubes
Working area: 275 x 205 x 75 mm
Tube volume: up to 30 mm Ø,
e. g. 10 ml, 15 ml, 50 ml tubes

Platform Bio PP-4



Flat Platform with non-slip silicon mat for Petri dishes, culture flasks and agglutination.
Working area: 230 x 230 mm
Order No. 105.1218