

Filter Tip Extended Length BT10XL/S

Description

Each lot undergoes stringent inspection and individual lot testing ensures the products are certified.

*Exclusive S³ - Polymer was designed to increase pipetting accuracy by virtually eliminating tip retention and sample hold-up. This prevents liquids from sticking to the tip surface but sliding residue-free over the inside surface of the tip.

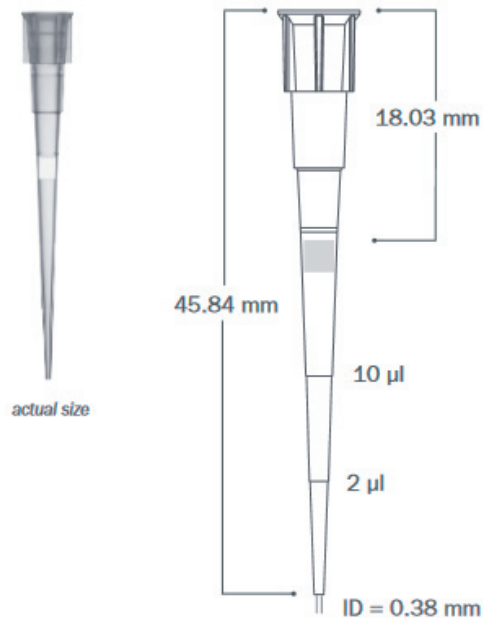
All filter tips are certified free of:

- DNA
- DNase & RNase
- Endotoxine (Pyrogene)

Part number:

BT10XLS3 (S³)*: 102.2217

BT10XL: 102.2202



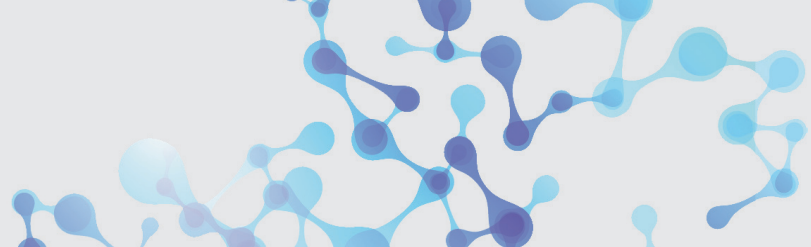
Specifications

Graduation Marks	at 2 µl and 10µl	
Tip Composition	Virgin Polypropylene	
Tip Type	S ³ (Sample Saving Surface)* BT10XLS3	Polypropylene BT10XL
Filter Material	High Density Polyethylene	
Sterile	Yes	
Configuration	Racked	
Packaging Breakdown	96 tips per rack 10 racks per pack 5 pack per case	
Autoclavable	No	
Storage Conditions	Store in a clean, dry environment at room temperature 15-30°C	

Pipettor Compatibility

Biohit Proline™ 10 µl
Brand Transferpette S™ 10 µl
Capp™ 10 µl
CLP Beta-Pette™ 2 µl and 10 µl
CLP Poseidon™ 2 µl and 10 µl
CLP Poseidon Electronic™ 20 µl
Eppendorf Reference™ 2.5 µl and 10 µl
Eppendorf Research™ 2.5 µl and 10 µl
Eppendorf Research Plus™ 2.5 µl and 10 µl
Eppendorf Xplorer™ 10 µl

Finnpipette™ 10 µl and 50 µl
Finnpipette™ Electronic 10 µl
Finnpipette F1™ 10 µl
Gilson Pipetman™ P2 and P10
Hamilton™ 2 µl and 10 µl
Nichiryo Nichipet EX™ 10 µl
Nichiryo Oxford Benchmate™ 2 µl
Nichiryo Oxford Multimate™ 10 µl
Socorex Calibri 822™ 10 µl
VWR Ultra High Performance™ 2 µl and 10 µl



Barrier Tips in Safety Rack

Benefits of Optimus Rack

Secured Tips

The locking clasp clicks to ensure the rack is securely closed giving you peace of mind when transporting or storing opened racks.
The rack is designed to withstand multiple drops off a lab bench, and to lock or unlock with one hand.

Stable Corners

Redesigned base has a larger footprint (SBS) allowing you to pipette of the corners without the tipping the rack.

Structural Support

A ribbing network is built into the base and snapcard to create a stable platform for multichannel pipetting, giving you secure seals on each channel.

Environmentally Conscious

The Optimus Rack is manufactured with 1/3 less plastic than leading competitor racks while providing top functionality and strength.



sample rack



less plastic

VBM_018c_E 12/2018 Subject to technical changes and errors.