

# Filter Tip Barrier Tip BT300

## Description

Each lot undergoes stringent inspection and individual lot testing ensures the products are certified.

\*Exclusive S<sup>3</sup> - Polymer was designed to increase pipetting accuracy by virtually eliminating tip retention and sample hold-up. This prevents liquids from sticking to the tip surface but sliding residue-free over the inside surface of the tip.

All filter tips are certified free of:

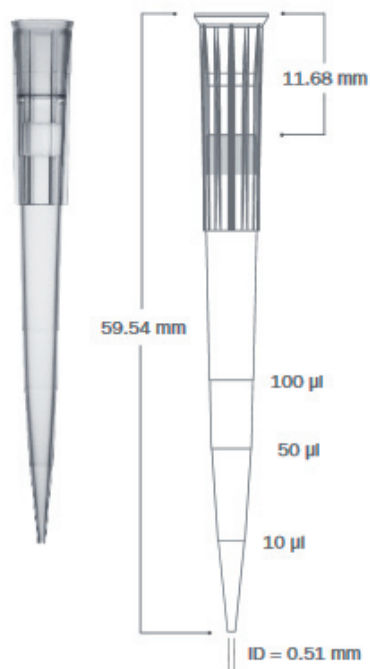
- DNA
- DNase & RNase
- Endotoxine (Pyrogene)

### Part number:

BT300 (S<sup>3</sup>): 102.2214

## Technical Data

Graduation Marks	at 10µl, 50µl, 100µl
Tip Composition	Virgin polypropylene
Tip Type Available	S <sup>3</sup> (Sample Saving Surface)*
Filter Material	High Density Polyethylene
Pre-Sterilized	Yes
Configuration	Racked (s. Page 2)
Packaging Breakdown	96 tips per rack 10 racks per pack 5 packs per case
Autoclavable	No
Storage Conditions	Store in a clean, dry environment at room temperature 15-30°C

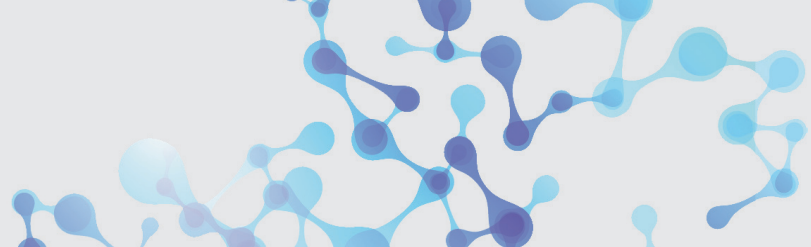


## Pipettor Compatibility

Biohit™ M100 and M200  
Biohit Proline Plus™ 100 µl (2090 Series)  
Biohit Proline Plus™ 200 µl  
Brand Transferpette S™ 200 µl  
Brand Transferpette Electronic™ 300 µl  
Capp™ 50 µl, 100 µl and 300 µl  
CLP Beta-Pette™ 200 µl  
CLP Poseidon™ 50 µl, 100 µl, 200 µl and 300 µl  
CLP Poseidon Electronic™ 200 µl  
Eppendorf Reference™ 200 µl

Eppendorf Research™ 100 µl (2090 Series)  
Eppendorf Research™ 200 µl and 300 µl  
Eppendorf Research Plus™ 200 µl  
Eppendorf Xplorer™ 300 µl  
Finnpipette™ 50 µl, 200 µl and 300 µl  
Finnpipette™ Electronic 300 µl  
Gilson Pipetman™ P200  
Gilson Pipetman Ultra™ U200  
Hamilton™ 25 µl, 100 µl and 300 µl

Nichiryo Nichipet EX™ 200 µl  
Nichiryo Oxford Multimate™ 300 µl  
Socorex Calibri 822™ 200 µl  
VWR Ergonomic High Performance™ 200 µl (2090 Series)  
VWR Ergonomic High Performance™ 200 µl  
VWR Ultra High Performance™ 200 µl, 100 µl (2090 Series)  
VWR Ultra High Performance™ 200 µ



# Pipette Tips in Safety Rack

## Benefits of Optimus Rack

### Secured Tips

The locking clasp clicks to ensure the rack is securely closed giving you peace of mind when transporting or storing opened racks.

The rack is designed to withstand multiple drops off a lab bench, and to lock or unlock with one hand.

### Stable Corners

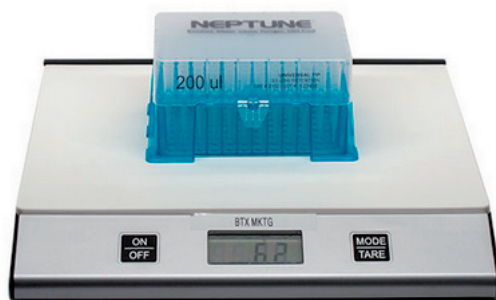
Redesigned base has a larger footprint (SBS) allowing you to pipette of the corners without the tipping the rack.

### Structural Support

A ribbing network is built into the base and snapcard to create a stable platform for multichannel pipetting, giving you secure seals on each channel.

### Environmentally Conscious

The Optimus Rack is manufactured with 1/3 less plastic than leading competitor racks while providing top functionality and strength.



less plastic