

# Filter Tips

## Barrier Tips BT1000

### Description

Each lot undergoes stringent inspection and individual lot testing ensures the products are certified.

\*Exclusive S3 - Polymer was designed to increase pipetting accuracy by virtually eliminating tip retention and sample hold-up. This prevents liquids from sticking to the tip surface but sliding residue-free over the inside surface of the tip.

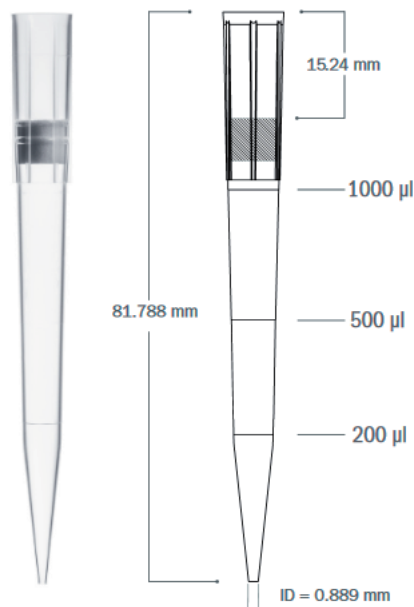
All filter tips are certified free of:

- DNA
- DNase & RNase
- Endotoxine (Pyrogene)

### Part number:

BT1000.96 (S<sup>3</sup>)\*: 102.2212

BT1000.N (natural Polypropylene): 102.2216



### Technical Data

Color	clear
Tip Composition	natural Polypropylene (BT1000.N) or S <sup>3</sup> -quality* (BT1000.96)
Filter Material	high-density Polyethylen
Pre-Sterile	Yes
Configuration	Racked (s. page 2)
Packaging Breakdown	96 tips per rack 8 racks per pack 4 packs per case
Autoclavable	No
Storage Conditions	Store in a clean, dry environment at room temperature 15-30°C

### Pipettor Compatibility

Biohit Proline™ 1000 µl

Brand Transferpette™ 1000 µl

CLP Beta-Pette™ 1000 µl

CLP Poseidon™ 1000 µl

CLP Poseidon Electronic™ 1000 µl

Eppendorf Reference™ 1000 µl

Eppendorf Research™ 1000µl

Eppendorf Research Plus™ 1000 µl

Eppendorf Xplorer™ 1000 µl

Finnpipette™ 1000 µl & 1200 µl

Gilson Pipetman™ P1000

Hamilton™ 1000 µl

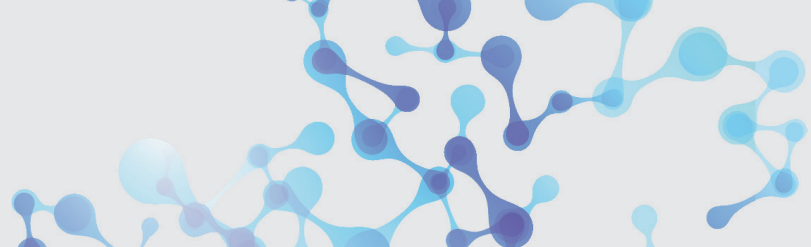
Labnet BioPette E™ 1200 µl

Nichiryo Nichipet EX™ 1000 µl

Socorex Calibri 822™ 1000 µl

VWR Ergonomic High Performance™ 1000 µl

VWR Ultra High Performance™ 1000 µl



# Pipette Tips with Safety Rack

## Benefits of Optimus Racks

### Secured Tips

The locking clasp clicks to ensure the rack is securely closed giving you peace of mind when transporting or storing opened racks.

The rack is designed to withstand multiple drops off a lab bench, and to lock or unlock with one hand.

### Stable Corners

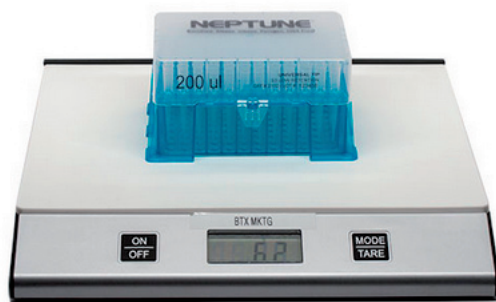
Redesigned base has a larger footprint (SBS) allowing you to pipette of the corners without the tipping the rack.

### Structural Support

A ribbing network is built into the base and snapcard to create a stable platform for multichannel pipetting, giving you secure seals on each channel.

### Environmentally Conscious

The Optimus Rack is manufactured with 1/3 less plastic than leading competitor racks while providing top functionality and strength.



Less plastic