

# Filter Tips

## Barrier Tip BT100

### Description

Each lot undergoes stringent inspection and individual lot testing ensures the products are certified.

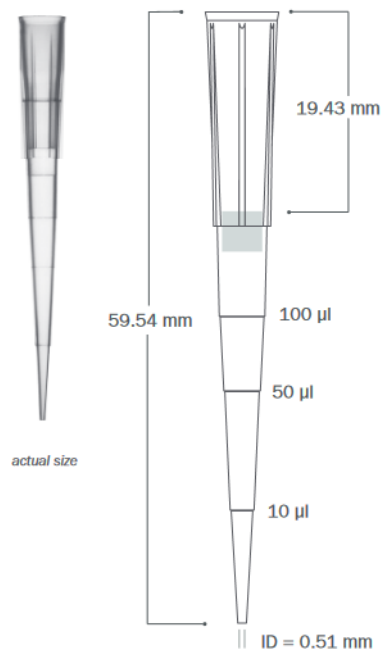
\*Exclusive S<sup>3</sup> - Polymer was designed to increase pipetting accuracy by virtually eliminating tip retention and sample hold-up. This prevents liquids from sticking to the tip surface but sliding residue-free over the inside surface of the tip.

All filter tips are certified free of:

- DNA
- DNase & RNase
- Endotoxine (Pyrogene)

### Part number:

BT100 (S<sup>3</sup>)\*: 102.2208



### Technical Data

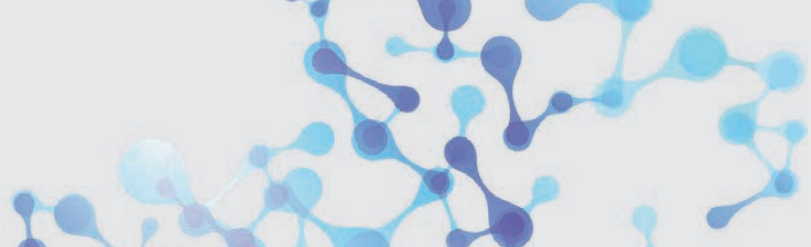
Graduation Marks	at 10µl, 50µl, 100µl
Tip Composition	Virgin Polypropylene
Tip Type Available	S <sup>3</sup> (Sample Saving Surface)*
Filter Material	High Density Polyethylene
Pre-Sterilized	Yes
Configuration	Racked (s. Page 2)
Packaging Breakdown	96 tips per rack 10 racks per pack 5 packs per case
Autoclavable	Yes, at 120° C for 10-15 minutes at 15 PSI
Storage Conditions	Store in a clean, dry environment at room temperature 15-30°C

### Pipettor Compatibility

Biohit™ M100 und M200  
Biohit Proline Plus™ 200 µl  
Brand Transferpette S™ 200 µl  
Brand Transferpette Electronic™ 300 µl  
Capp™ 50 µl, 100 µl und 300 µl  
CLP Beta-Pette™ 200 µl  
CLP Poseidon™ 50 µl, 100 µl,  
200 µl und 300 µl

CLP Poseidon Electronic™ 200 µl  
Eppendorf Reference™ 200 µl  
Eppendorf Research™ 200 µl und 300 µl  
Eppendorf Research Plus™ 200 µl  
Eppendorf Xplorer™ 300 µl  
Finnpipette™ 50 µl, 200 µl und 300 µl  
Finnpipette™ Electronic 300 µl  
Gilson Pipetman™ P200

Gilson Pipetman Ultra™ U200  
Hamilton™ 25 µl, 100 µl und 300 µl  
Nichiryo Nichipet EX™ 200 µl  
Nichiryo Oxford Multimate™ 300 µl  
Socorex Calibri 822™ 200 µl  
VWR Ergonomic High Performance™ 200 µl  
VWR Ultra High Performance™ 200 µl



# Pipette Tips in Safety Rack

## Benefits of Optimus Rack

### Secured Tips

The locking clasp clicks to ensure the rack is securely closed giving you peace of mind when transporting or storing opened racks.

The rack is designed to withstand multiple drops off a lab bench, and to lock or unlock with one hand.

### Stable Corners

Redesigned base has a larger footprint (SBS) allowing you to pipette of the corners without the tipping the rack.

### Structural Support

A ribbing network is built into the base and snapcard to create a stable platform for multichannel pipetting, giving you secure seals on each channel.

### Environmentally Conscious

The Optimus Rack is manufactured with 1/3 less plastic than leading competitor racks while providing top functionality and strength.



sample rack



less plastic